



QEN/QMC

Single Stage End Suction Closed Impeller Chemical Process Pumps



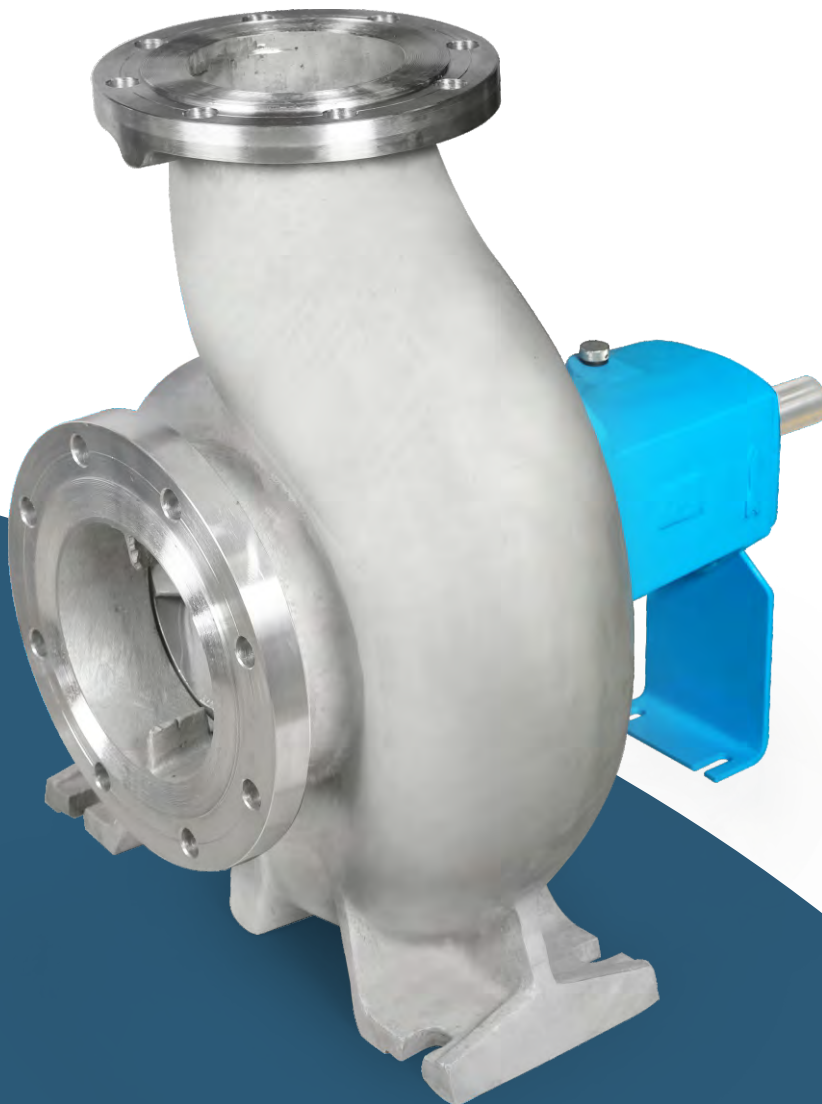
Available in

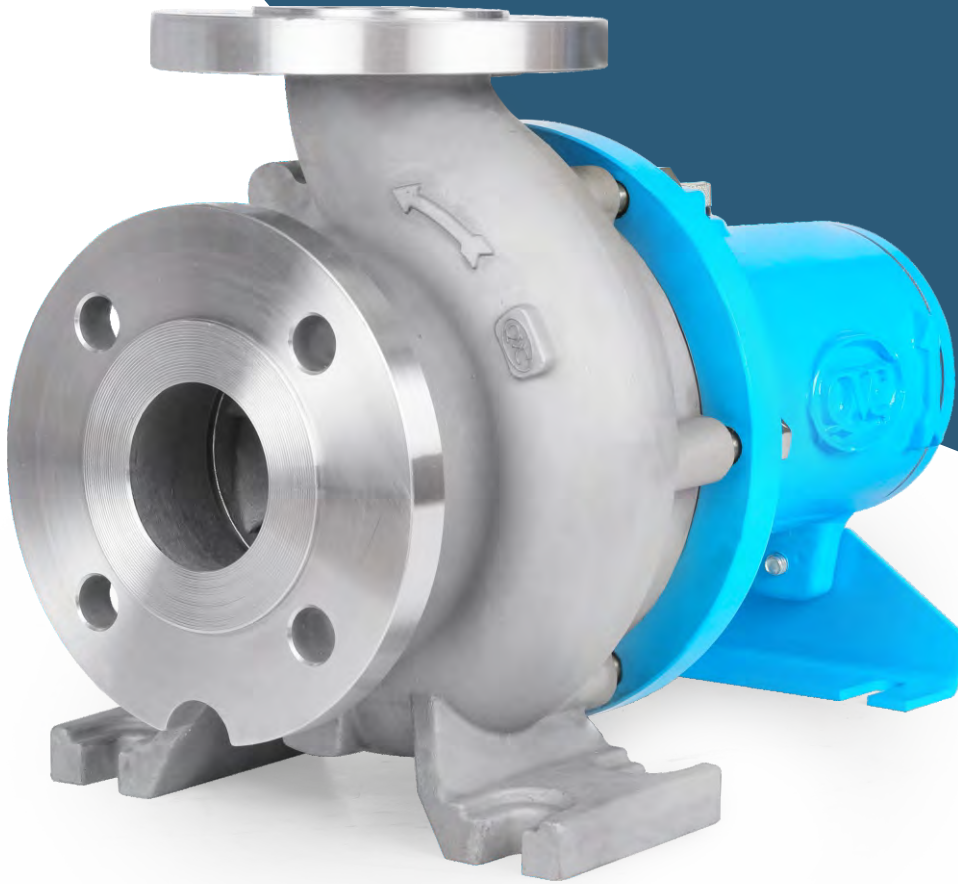
WCB (CAST STEEL) | CF8 (SS-304) | CF8M (SS-316) | CF3 (SS-304L) | CF3M (SS-316L)
CN7M (ALLOY-20) | CW12MW (HASTELLOY-C) | N12MV (HASTELLOY-B)
DUPLEX AND SUPER DUPLEX ALLOYS

The closed impeller is the acknowledged best design for process services. It is ideally suited for clear liquids .

Fields of Application

Petrochemical | Oil & Gas | Steel Industry | Automotive | Agriculture | Tank Farm | Pulp and Paper | Chemical | Semiconductor | Food Processing | Power Generation | Pharmaceuticals Water Treatment | Paper Stock | Pipeline | General Industries | Textile | Mining





Design

Single stage, frame mounted chemical process pump of heavy duty design.

Mechanical seal:

Single, Double, Inside, Outside etc.

Operating Range

50 Hz Operation

Flow Rates 1-650 m³/hr

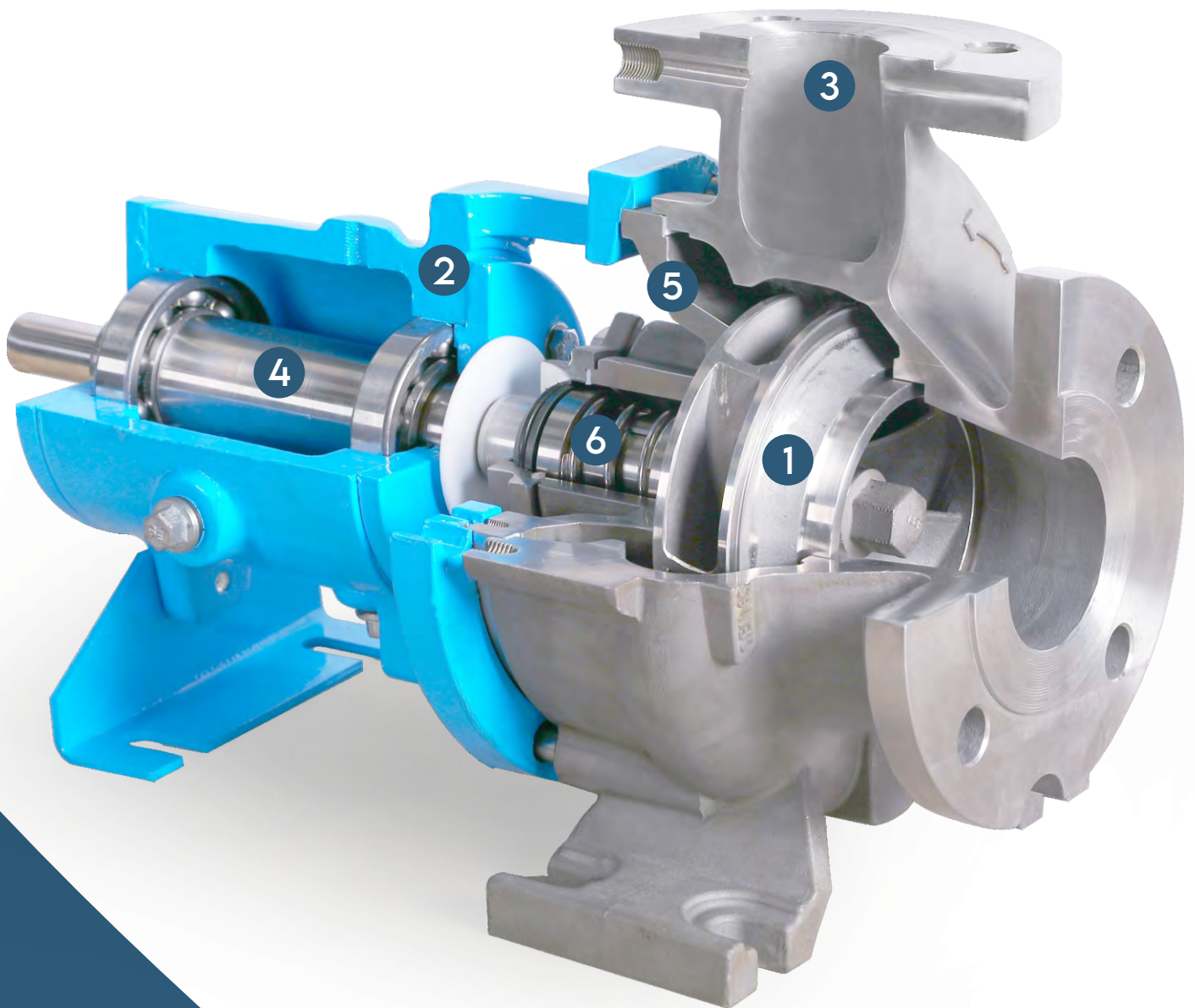
Delivery Heads Upto 120 m

Performance curve of particular model available on request.

Operating Temperatures :
-60/+300 °C

Operating Pressure :
Upto 16 bar (235 psi)

Cut View of Pump



Features & Specifications

1 Impeller

- Closed impeller design ensures maximum efficiency.
- The impeller itself is keyed and is positively locked onto shaft and sealed.

2 Bearing Frame

- Very sturdy one piece cast iron bearing frame with oil bath lubrication.

3 Casing

- Casing is having 10mm to 12mm wall thickness, increased reliability and maximized casing life.
- Top centerline discharge for air handling, self venting.
- Back pull out design for ease of maintenance.
- Integral casing feet prevent pipe load misalignment – maximized seal and bearing life.
- Serrated flanges standard for positive sealing against leakage.

4 Pump Shaft

- Rigid shaft designed for minimum deflection at seal faces – less than 0.002 in. (.05 mm).
- Available with or without shaft sleeve.

5 Back Plate

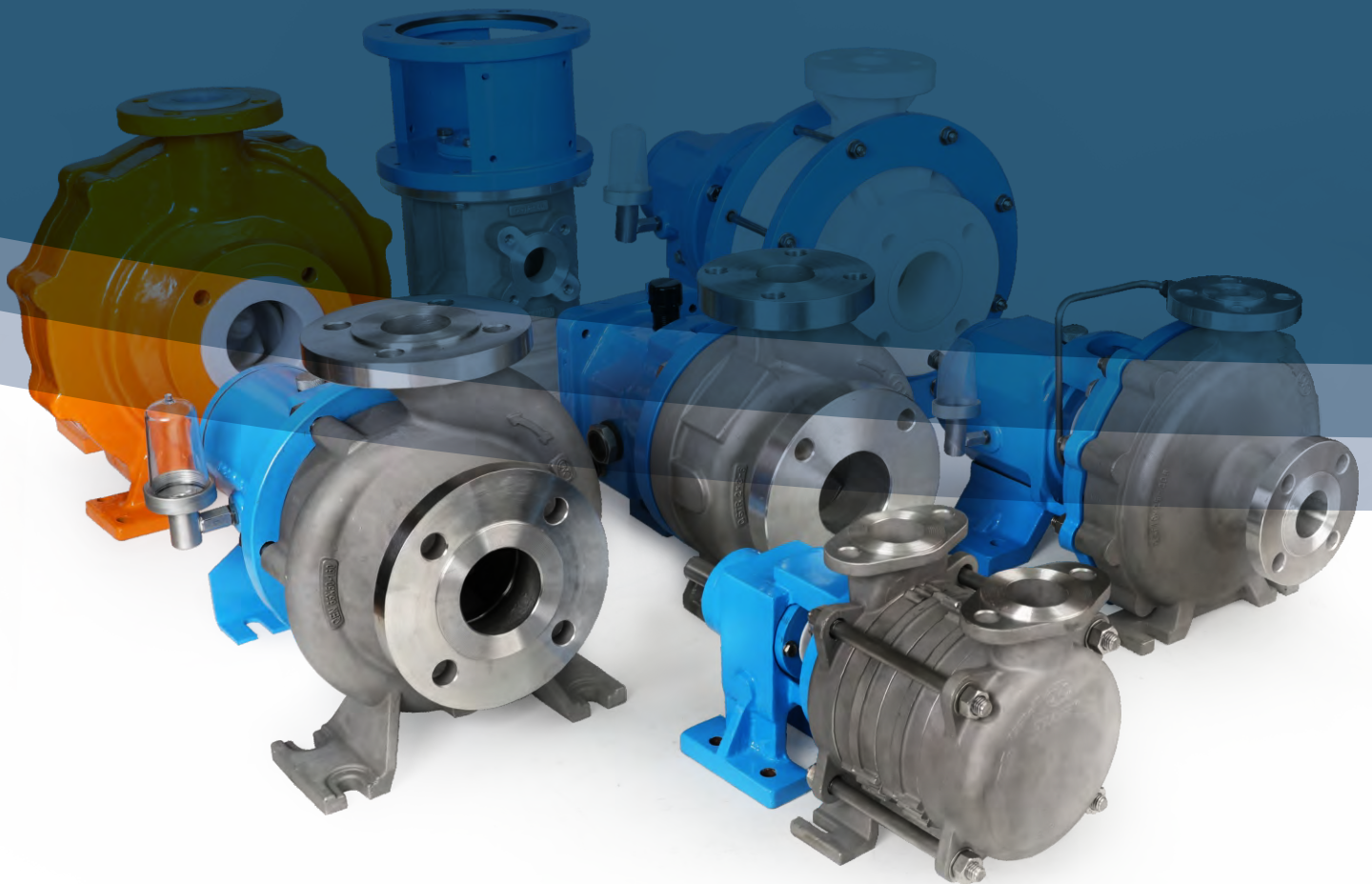
- Stuffing box covers many kinds of mechanical seal applications. Internal or external, double or single, balanced or unbalanced seals, with any required gland connections.

6 Mechanical Seal Options

- Internal and external mechanical seal.
- Cartridge seal.
- Double seal for special applications.

Other QVC Process Pumps

Open impeller metallic pumps | Closed impeller metallic pumps
Non metallic injection moulded pumps | Non metallic lined pumps
Horizontal self priming pumps | Vertical self priming pumps
ANSI Open impeller metallic pumps



QVC CHEMICAL EQUIPMENTS